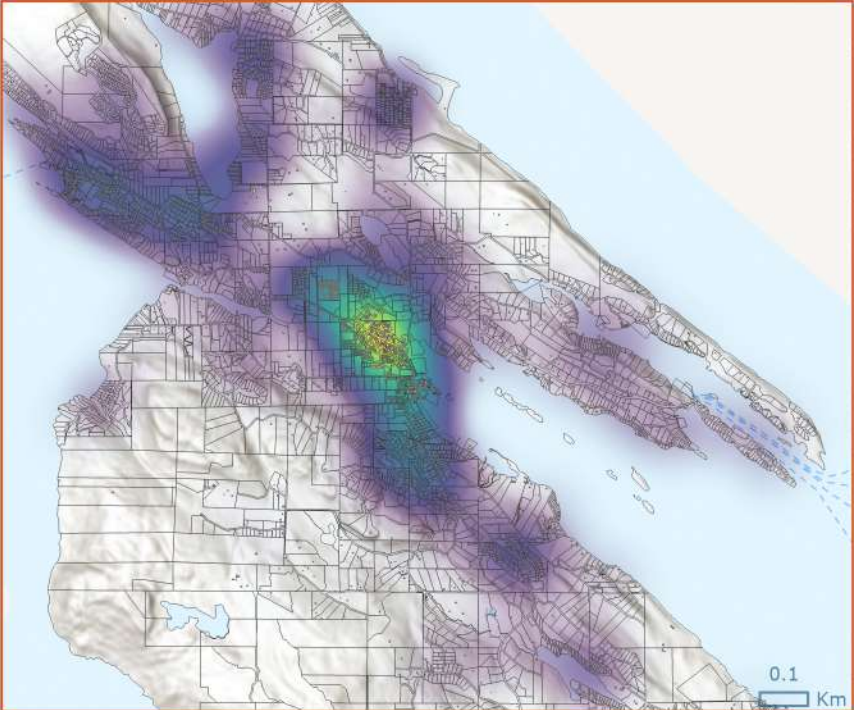
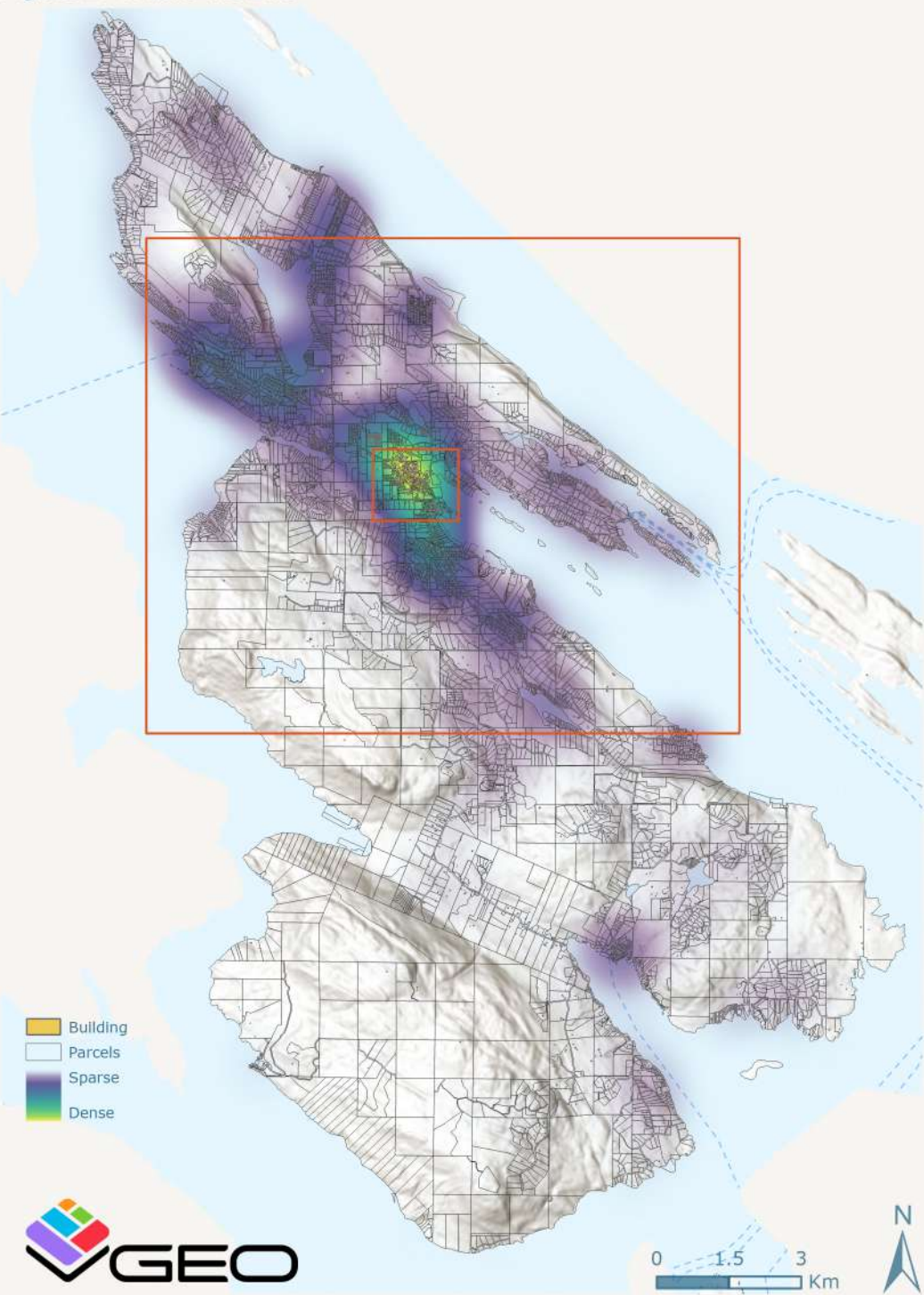
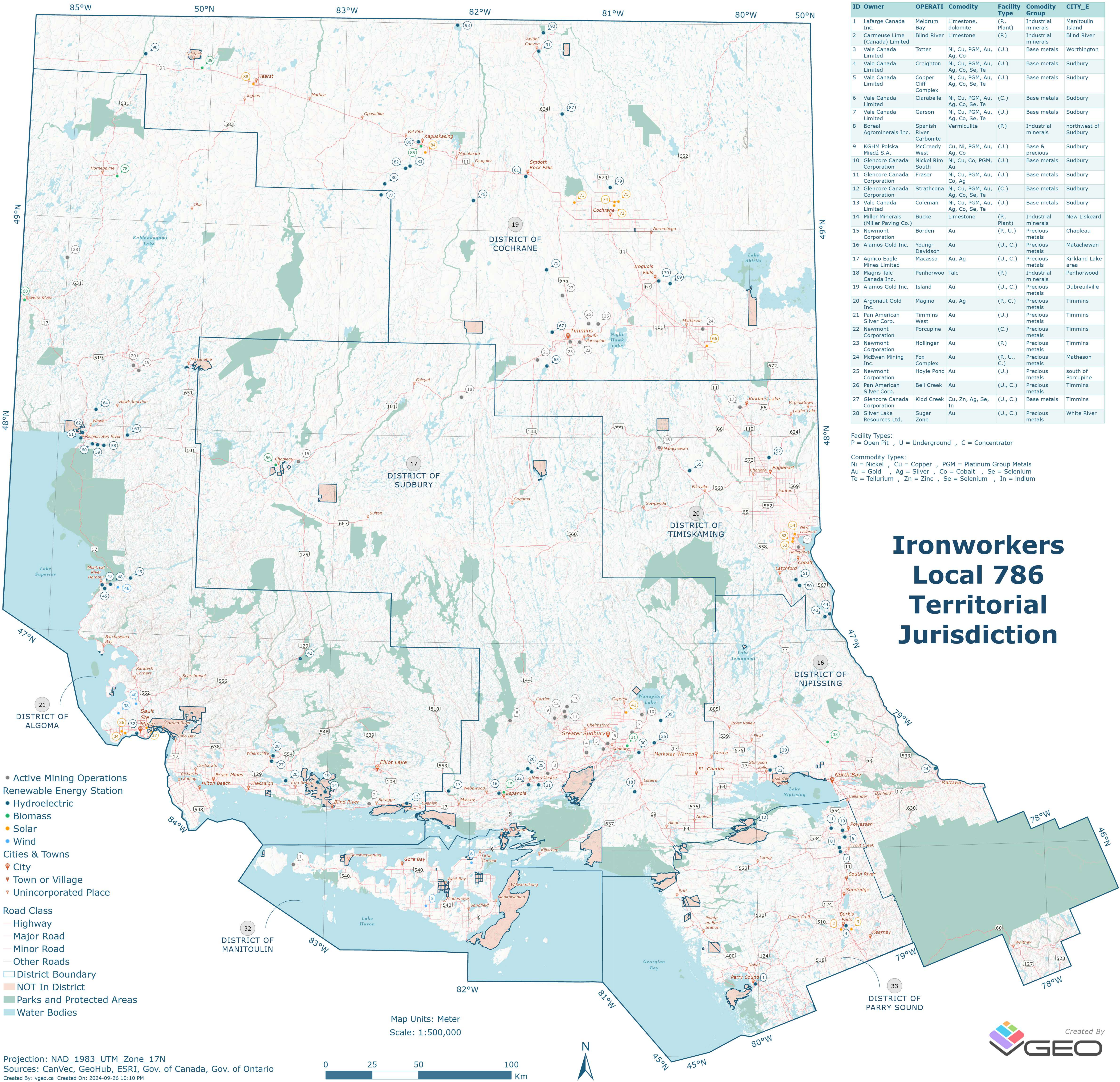


Figure 1: Where We Live





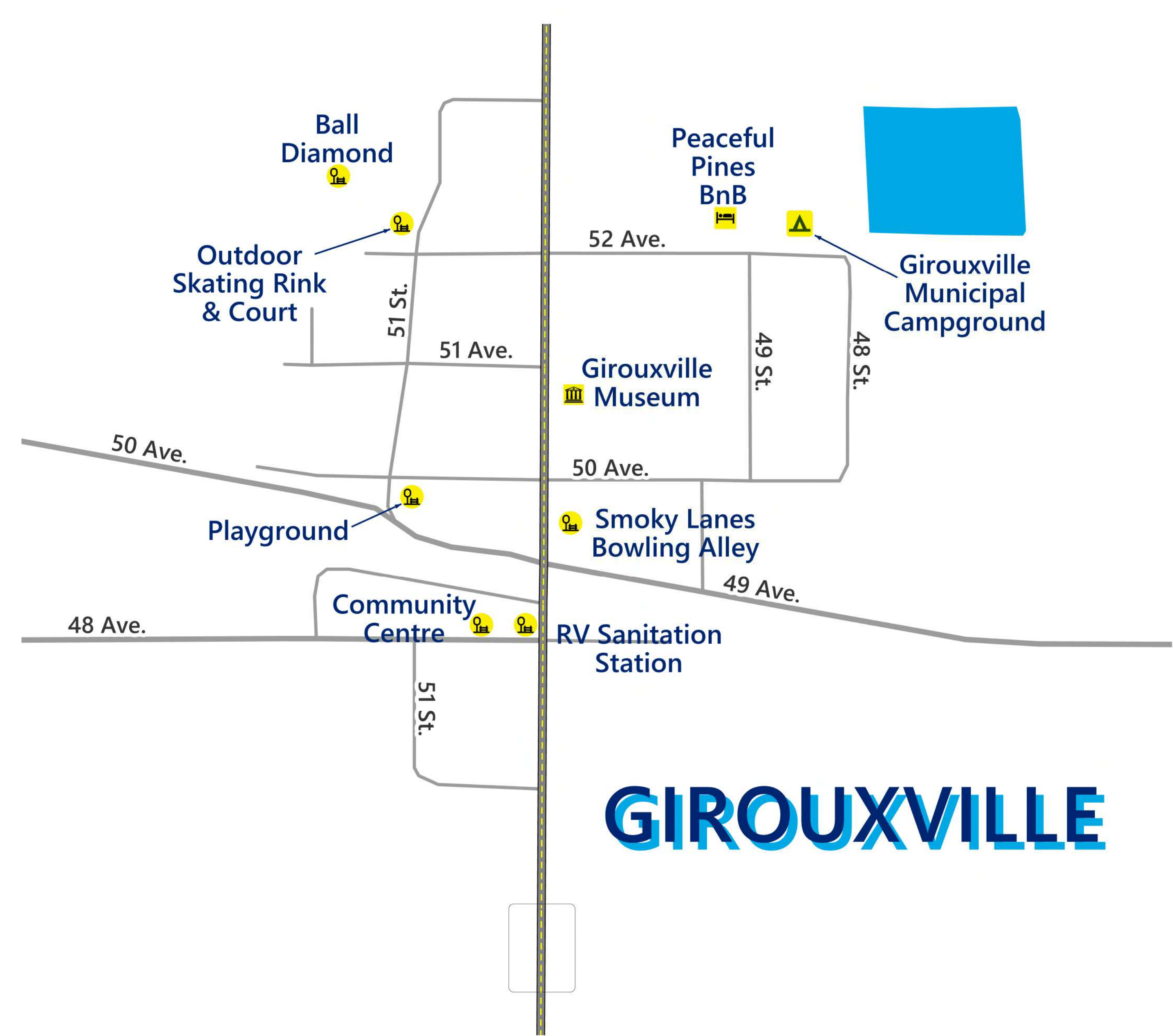
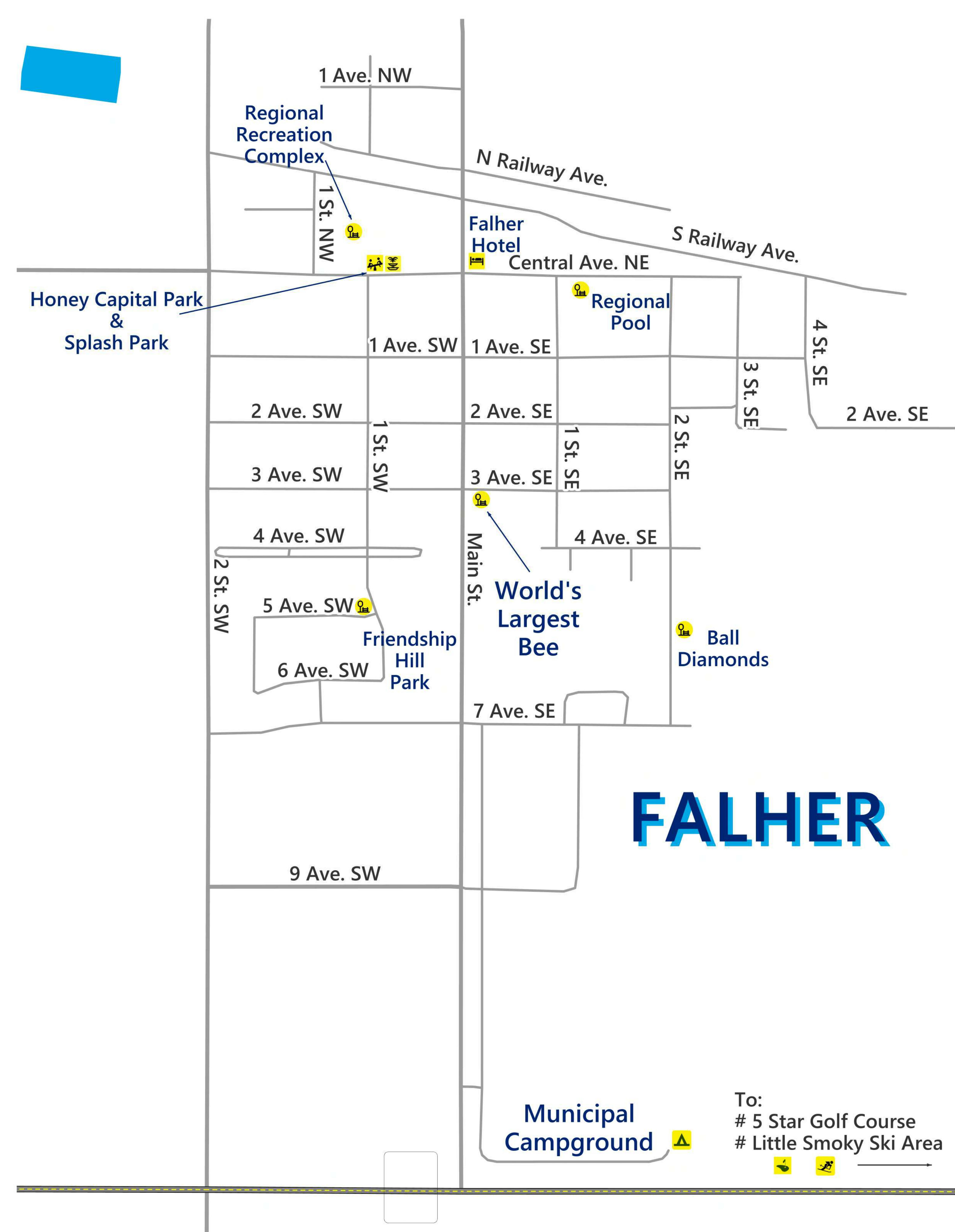
ID	Owner	OPERATI	Comodity	Facility Type	Comodity Group	CITY_E
1	Lafarge Canada Inc.	Meldrum Island	Limestone, dolomite	(P, Plant)	Industrial minerals	Manitoulin Island
2	Carmeuse Lime (Canada) Limited	Blind River	Limestone	(P)	Industrial minerals	Blind River
3	Vale Canada Limited	Totten	Ni, Cu, PGM, Au, Ag, Co	(U.)	Base metals	Worthington
4	Vale Canada Limited	Creighton	Ni, Cu, PGM, Au, Ag, Co, Se, Te	(U.)	Base metals	Sudbury
5	Vale Canada Limited	Copper Cliff Complex	Ni, Cu, PGM, Au, Ag, Co, Se, Te	(U.)	Base metals	Sudbury
6	Vale Canada Limited	Clababelle	Ni, Cu, PGM, Au, Ag, Co, Se, Te	(C.)	Base metals	Sudbury
7	Vale Canada Limited	Garson	Ni, Cu, PGM, Au, Ag, Co, Se, Te	(U.)	Base metals	Sudbury
8	Boreal Agrominerals Inc.	Spanish River	Vermiculite	(P)	Industrial minerals	northwest of Sudbury
9	KGHM Polska Miedz S.A.	McCreedy West	Cu, Ni, PGM, Au, Ag, Co	(U.)	Base & precious	Sudbury
10	Glencore Canada Corporation	Nickel Rim South	Ni, Cu, Co, PGM, Co, Ag	(U.)	Base metals	Sudbury
11	Glencore Canada Corporation	Fraser	Ni, Cu, PGM, Au, Co, Ag	(U.)	Base metals	Sudbury
12	Glencore Canada Corporation	Strathcona	Ni, Cu, PGM, Au, Ag, Co, Se, Te	(C.)	Base metals	Sudbury
13	Vale Canada Limited	Coleman	Ni, Cu, PGM, Au, Ag, Co, Se, Te	(U.)	Base metals	Sudbury
14	Miller Minerals (Miller Paving Co.)	Bucke	Limestone	(P, Plant)	Industrial minerals	New Liskeard
15	Newmont Corporation	Borden	Au	(P, U.)	Precious metals	Chapleau
16	Alamos Gold Inc.	Young-Davidson	Au	(U., C.)	Precious metals	Matatchewan
17	Agnico Eagle Mines Limited	Macassa	Au, Ag	(U., C.)	Precious metals	Kirkland Lake area
18	Magris Talc Canada Inc.	Penhorwoo	Talc	(P)	Industrial minerals	Penhorwood
19	Alamos Gold Inc.	Island	Au	(U., C.)	Precious metals	Dubreuilville
20	Argonaut Gold Inc.	Magino	Au, Ag	(P, C.)	Precious metals	Timmins
21	Pan American Silver Corp.	Timmins West	Au	(U.)	Precious metals	Timmins
22	Newmont Corporation	Porcupine	Au	(C.)	Precious metals	Timmins
23	Newmont Corporation	Hollinger	Au	(P)	Precious metals	Timmins
24	McEwen Mining Inc.	Fox Complex	Au	(P, U., C.)	Precious metals	Matheson
25	Newmont Corporation	Hoyle Pond	Au	(U.)	Precious metals	south of Porcupine
26	Pan American Silver Corp.	Bell Creek	Au	(U., C.)	Precious metals	Timmins
27	Glencore Canada Corporation	Kidd Creek	Cu, Zn, Ag, Se, In	(U., C.)	Base metals	Timmins
28	Silver Lake Resources Ltd.	Sugar Zone	Au	(U., C.)	Precious metals	White River

Facility Types:
P = Open Pit , U = Underground , C = Concentrator

Commodity Types:
Ni = Nickel , Cu = Copper , PGM = Platinum Group Metals
Au = Gold , Ag = Silver , Co = Cobalt , Se = Selenium
Te = Tellurium , Zn = Zinc , In = Indium

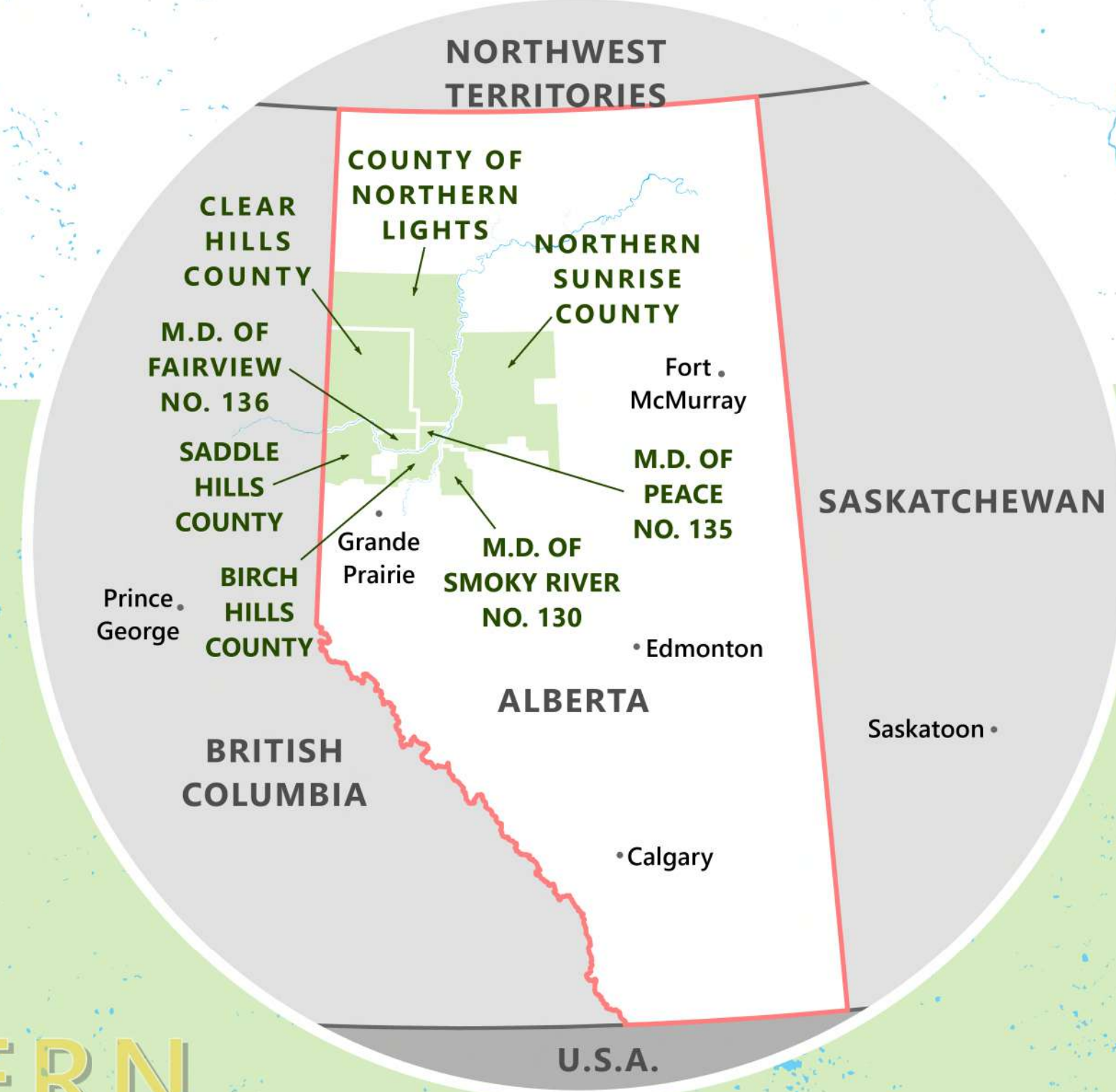
Ironworkers Local 786 Territorial Jurisdiction

ID	Facility	Operator	Prim Source	City
1	Cascade Street	Parry Sound Powergen Corp	Hydroelectric	Parry Sound
2	N.Land Power Burks Falls W.	Northland Power Solar Burks Falls West LP	Solar	Burks Falls
3	Northland Power Solar Burks Falls East	Northland Power Solar Burks Falls East LP	Solar	Burks Falls
4	Burk's Falls	Bracebridge Generation Ltd	Hydroelectric	Burks Falls
5	Providence Bay	Schneider Power Providence Bay Inc	Wind	Spring Bay
6	McLean's Mountain	McLean's Mountain Wind LP	Wind	Little Current
7	Geisler Falls / Corkery Falls	Carlisle LP No. 1	Hydroelectric	Trout Creek
8	Grier Falls	Carlisle Ltd Partnership	Hydroelectric	Powassan
9	Elliot Chute	Ontario Power Generation Inc	Hydroelectric	South River
10	Bingham Chute	Ontario Power Generation Inc	Hydroelectric	South River
11	Nipissing	Ontario Power Generation Inc	Hydroelectric	South River
12	Okkendaht	Okkendaht Hydro LP	Hydroelectric	Monetville
13	Serpent	Brookfield Renewable Energy Partners	Hydroelectric	Spanish
14	Scarfe Lake	1149377 Ontario Limited	Hydroelectric	Blind River
15	Espanola Mill	Domtar Inc	Biomass	Espanola
16	Domtar Espanola Mill	Domtar Inc	Hydroelectric	Espanola
17	Cameron Falls - BRP	Brookfield Renewable Energy Partners	Hydroelectric	Webbwood
18	McVittie	Ontario Power Generation Inc	Hydroelectric	Blind River
19	Chiblow Lake	Acres Productive Technologies Inv	Hydroelectric	McVittie
20	Red Rock Falls	Brookfield Renewable Energy Partners	Hydroelectric	Thessalon
21	Wabageshik	Inco Ltd	Hydroelectric	Worthington
22	Nairn	Inco Ltd	Hydroelectric	Nairn and Hyman
23	West Nipissing	West Nipissing Power Generation	Hydroelectric	Sturgeon Falls
24	Otto Holden	Ontario Power Generation (OPG)	Hydroelectric	Mattawan
25	High Falls (Worthington)	Inco Ltd	Hydroelectric	Worthington
26	Big Eddy Inco	Vale Canada Limited / Vale Canada Limi	Hydroelectric	Worthington
27	Wells	Brookfield Renewable Energy Partners	Hydroelectric	Thessalon
28	Rayner	Brookfield Renewable Energy Partners	Hydroelectric	Thessalon
29	Crystal Falls	Ontario Power Generation Inc	Hydroelectric	Crystal Falls
30	Coniston	Ontario Power Generation Inc	Hydroelectric	Sudbury
31	Sudbury LFG	Toromont Energy Ltd	Biomass	Sudbury
32	Clergie	Brookfield Renewable Energy Partners	Hydroelectric	Sault Ste. Marie
33	Merrick Landfill	North Bay Hydro Services Inc	Biomass	North Bay
34	SSM 1 (Leigh's Bay Rd.)	Starwood Energy	Solar	Sault Ste Marie
35	Stinson	Ontario Power Generation Inc	Hydroelectric	Sudbury
36	SSM 1 (Carpin Rd.)	Starwood Energy	Solar	Sault Ste Marie
37	SSM 2/3	Starwood Energy	Solar	Sault Ste Marie
38	Prince	Brookfield Renewable Energy Partners	Wind	Sault Ste. Marie
39	Moose Rapids	CA Hydro Developers, Inc / TransAlta (100%)	Hydroelectric	Sudbury
40	Goulais	Chi-Wilkwedong LP	Wind	Sault Ste. Marie
41	Val Caron	Csi Val Caron LP	Solar	Hammer
42	Aubrey Falls	Brookfield Renewable Energy Partners	Hydroelectric	Elliot Lake
43	Matabitchuan	Ontario Power Generation Inc	Hydroelectric	Matabitchuan
44	Lower Notch	Ontario Power Generation Inc	Hydroelectric	Cobalt
45	Hogg	Brookfield Renewable Energy Partners	Hydroelectric	Batchawana Bay
46	Bow Lake	Nodin Kitagan LP	Wind	Montreal River Harbour
47	Andrews	Brookfield Renewable Energy Partners	Hydroelectric	Batchawana Bay
48	Gartshore	Brookfield Renewable Energy Partners	Hydroelectric	Wawa
49	MacKay	Brookfield Renewable Energy Partners	Hydroelectric	Batchawana Bay
50	Ragged Chute	Ragged Chute Energy Inc/ TransAlta (100%)	Hydroelectric	Halleybury
51	Hound Chute	Umh Energy Partnership	Hydroelectric	Kenabeek
52	Liskeard 3	TransCanada Energy Ltd (2225342 On. Inc)	Solar	New Liskeard
53	Liskeard 4	TransCanada Energy Ltd (2225345 On. Inc)	Solar	New Liskeard
54	Liskeard 1	TransCanada Energy Ltd (2225256 On. Inc)	Solar	New Liskeard
55	Chute	Hydro-Electric Power Commission of Ontario	Hydroelectric	Matatchewan
56	Chapleau Cogeneration	Tembec Inc	Biomass	Chapleau
57	Misema	TransAlta (100%)	Hydroelectric	Englehart
58	McPhail	Brookfield Renewable Energy Partners	Hydroelectric	Wawa
59	Dunford	Brookfield Renewable Energy Partners	Hydroelectric	Wawa
60	Scott Falls	Brookfield Renewable Energy Partners	Hydroelectric	Wawa
61	Mission	Brookfield Renewable Energy Partners	Hydroelectric	Wawa
62	Harris	Brookfield Renewable Energy Partners	Hydroelectric	Wawa
63	Hollingsworth	Brookfield Renewable Energy Partners	Hydroelectric	Wawa
64	SteePhill	Brookfield Renewable Energy Partners	Hydroelectric	Wawa
65	WawaItin	Umh Energy Partnership	Hydroelectric	Timmins
66	Ramore	New Ospvf 11 LP	Solar	Timmins
67	Sandy Falls	Ontario Power Generation Inc	Hydroelectric	Timmins
68	White River	Drayton Valley Power Ltd	Biomass	White River
69	Twin Falls	H2O Power LP	Hydroelectric	Iroquois Falls
70	Iroquois Falls	H2O Power LP	Hydroelectric	Iroquois Falls
71	Lower Sturgeon	Umh Energy Partnership	Hydroelectric	Timmins
72	Northland Power Solar Empire	Northland Power Solar Empire LP	Solar	Cochrane
73	Northland Power Solar Long Lake	Northland Power Solar Long Lake LP	Solar	Hunta
74	N.Power Solar Martin's Meadows	Northland Power Solar Martin's Meadows LP	Solar	Cochrane
75	Northland Power Solar Abitibi	Northland Power Solar Abitibi LP	Solar	Cochrane
76	Carmichael	Brookfield Renewable Energy Partners	Hydroelectric	Fauquier-Strickland
77	Old Woman Falls	Nipiy-Owf Hydrokap LP	Hydroelectric	Kapusikasing
78	Becker Cogeneration	Becker Cogeneration Plant (1721027 On. Inc)	Biomass	Haig Township
79	Long Sault Rapids	Algonquin Power	Hydroelectric	Cochrane
80	White Otter Falls	Nipiy-Wof Hydrokap LP	Hydroelectric	Kapusikasing
81	Smooth Rock Falls	Gemini Srf Power Corp	Hydroelectric	Smooth Rock Falls
82	Camp Three Rapids	Amik-Ctr Hydrokap LP	Hydroelectric	Kapusikasing
83	Big Beaver Falls	Amik-Bbf Hydrokap LP	Hydroelectric	Kapusikasing
84	Kap Solar Park	New Ospvf 7 LP	Solar	Kapusikasing
85	Tembec Kapuskasing	Tembec Inc	Biomass	Kapusikasing
86	Kapusikasing	Spruce Falls Inc	Hydroelectric	Val Rita
87	Island Falls (H2O)	H2O Power LP	Hydroelectric	Iroquois Falls
88	Mattawishkwia	New Ospvf 10 LP	Solar	Hearst
89	Calstock	Atlantic Power Corp	Biomass	Hearst
90	Shekak (Nagagam)	Brookfield Renewable Energy Partners	Hydroelectric	Palmquist
91	Abitibi Canyon	Ontario Power Generation Inc	Hydroelectric	Cochrane
92	Peter Sutherland Sr.	Coral Rapids Power, OPG	Hydroelectric	Mowbray Township
93	Little Long	Ontario Power Generation	Hydroelectric	

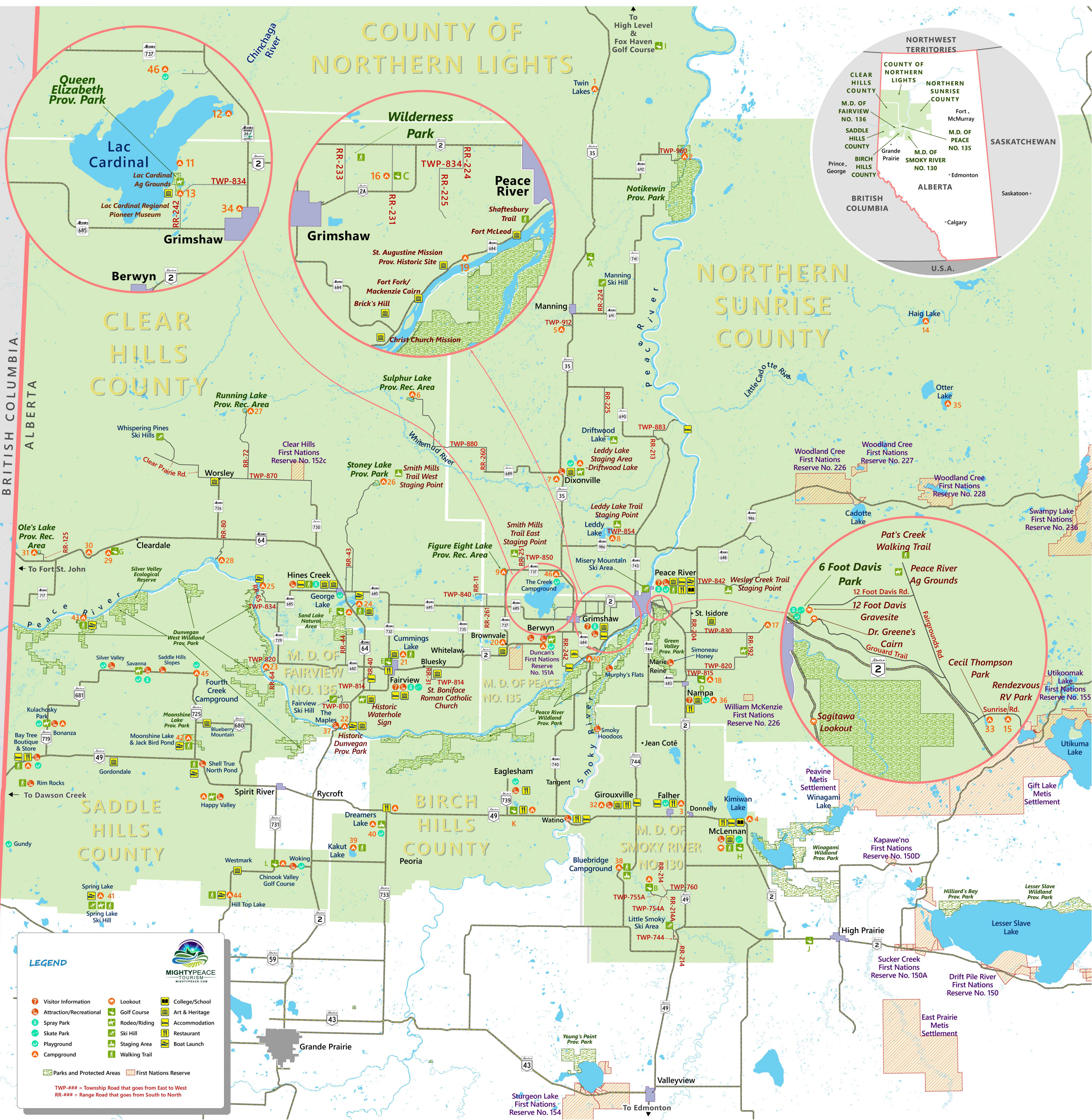


LEGEND			
	Visitor Information		Campground
	Attraction/Recreational		Golf Course
	Art & Heritage		Lookout
	Spray Park		Boat Launch
	Skate Park		Park
	Playground		Rodeo Ground
	College/School		Ski Hill
	Accommodation		Staging Area
	Restaurant		Walking Trail

COUNTY OF NORTHERN LIGHTS



BRITISH COLUMBIA
ALBERTA



LEGEND

Visitor Information	Lookout	College/School
Attraction/Recreational	Golf Course	Art & Heritage
Spray Park	Rodeo/Riding	Accommodation
Skate Park	Ski Hill	Restaurant
Playground	Staging Area	Boat Launch
Campground	Walking Trail	

Parks and Protected Areas First Nations Reserve

TWP-### = Township Road that goes from East to West
RR-### = Range Road that goes from South to North

Welcome to Mighty Peace Country, the place to turn for exciting seasonal activities and events in Northwestern Alberta. Discover the natural beauty, the endless potential and the exciting opportunities the Mighty Peace Region has to offer. For more ideas and up-to-date information visit Mighty Peace Tourism at www.mightypeace.com or on Facebook.



MIGHTYPEACE
TOURISM
MIGHTYPEACE.COM

2024-2025 ACTIVITY GUIDE



*Memories
Are Made
IN THE
MIGHTY PEACE*

CAMPGROUNDS

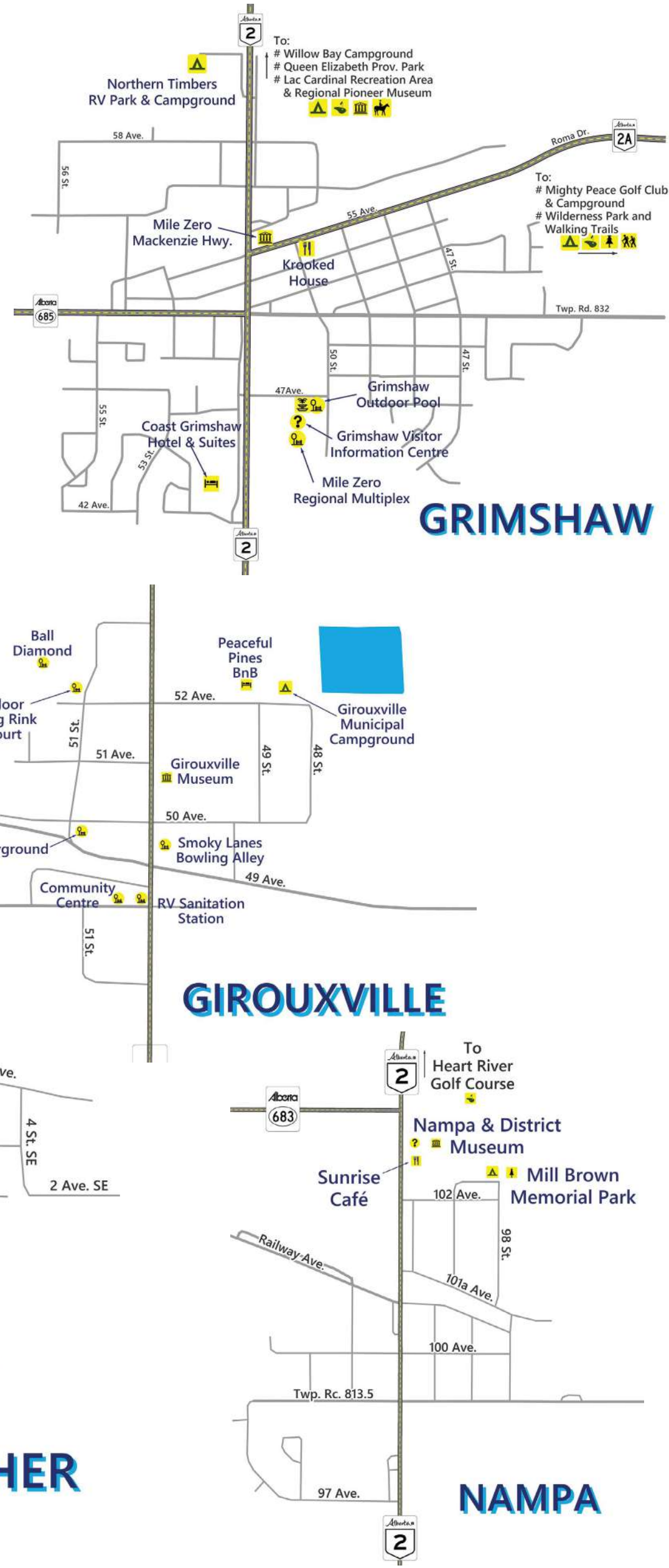
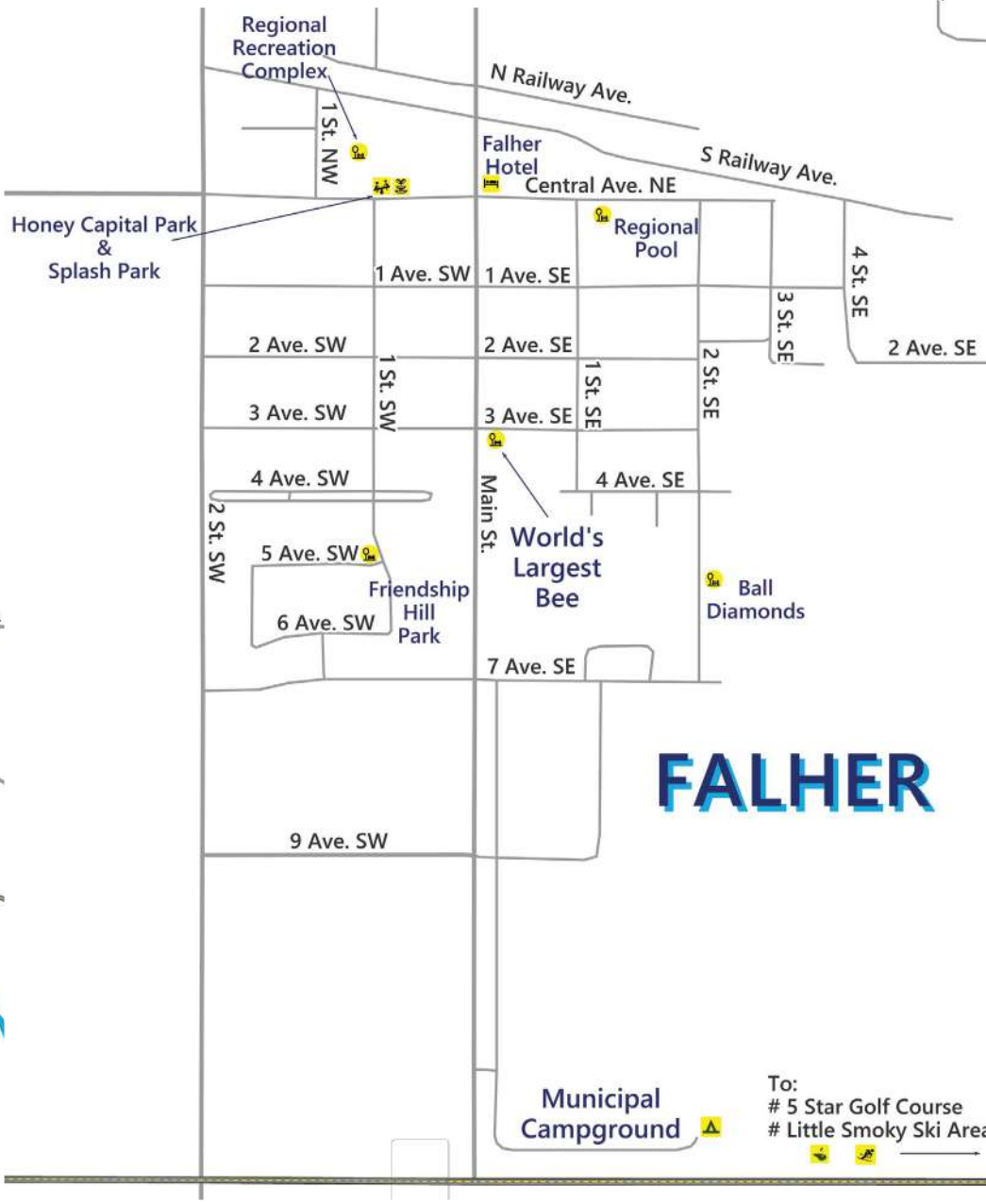
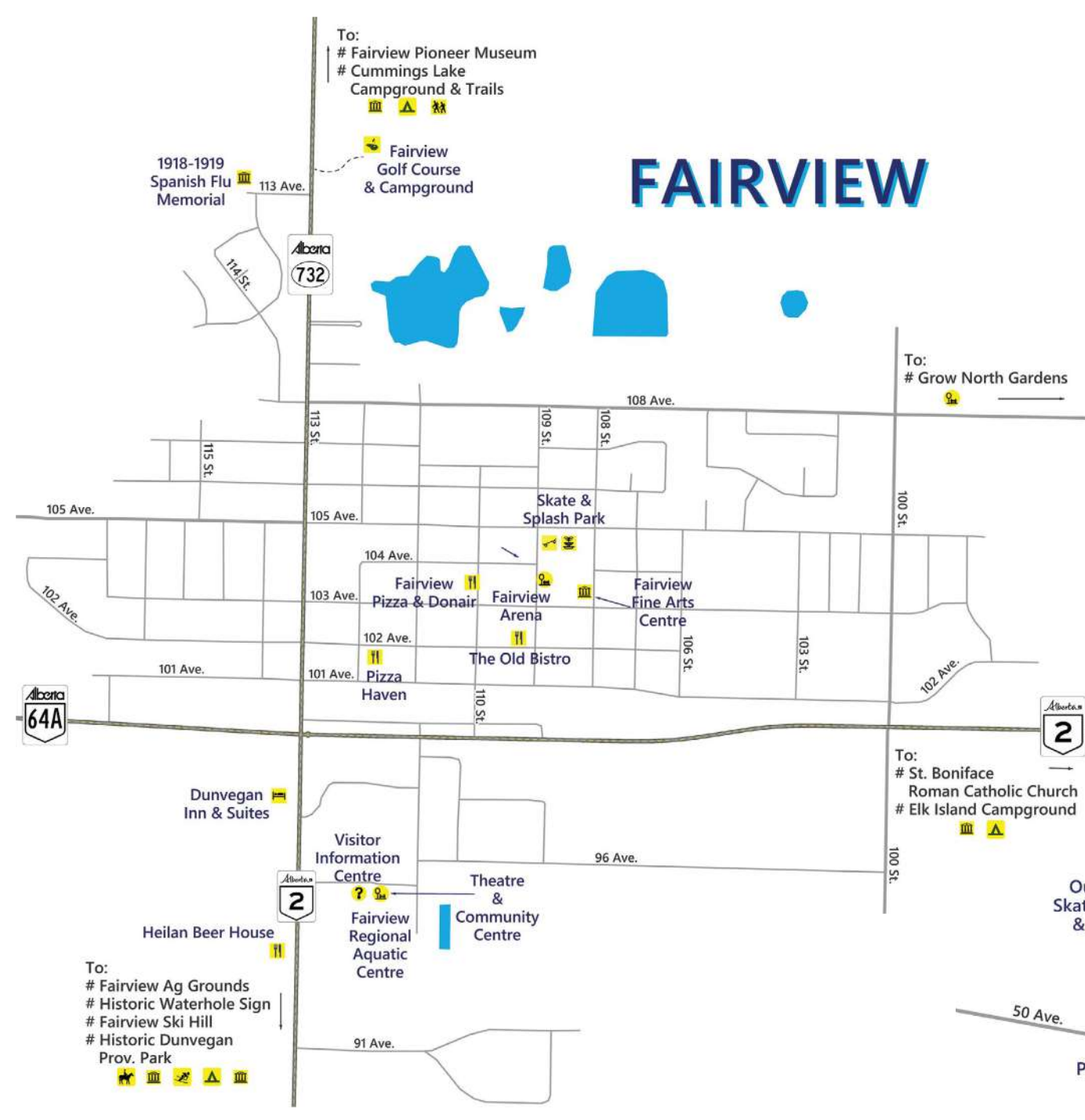
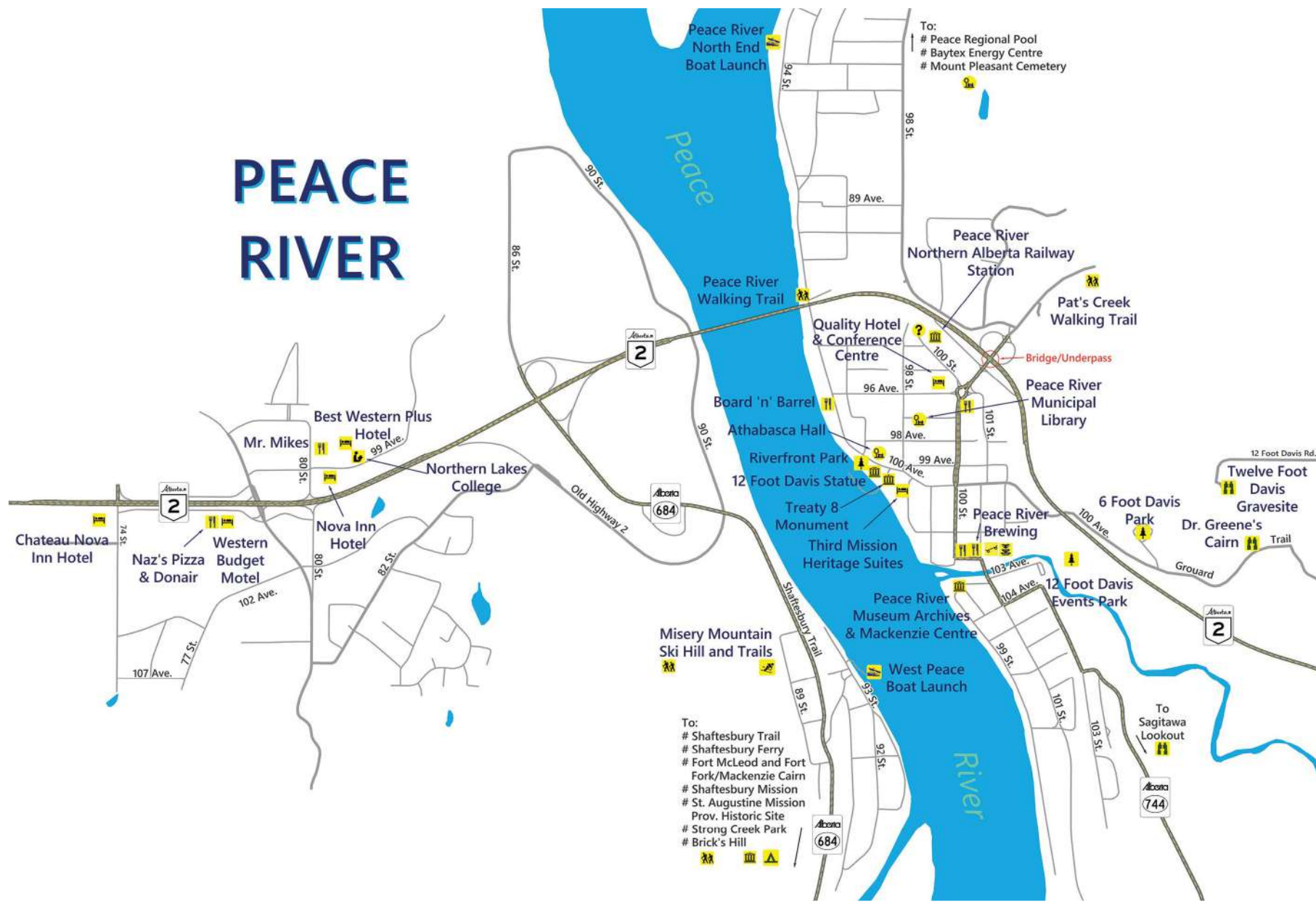
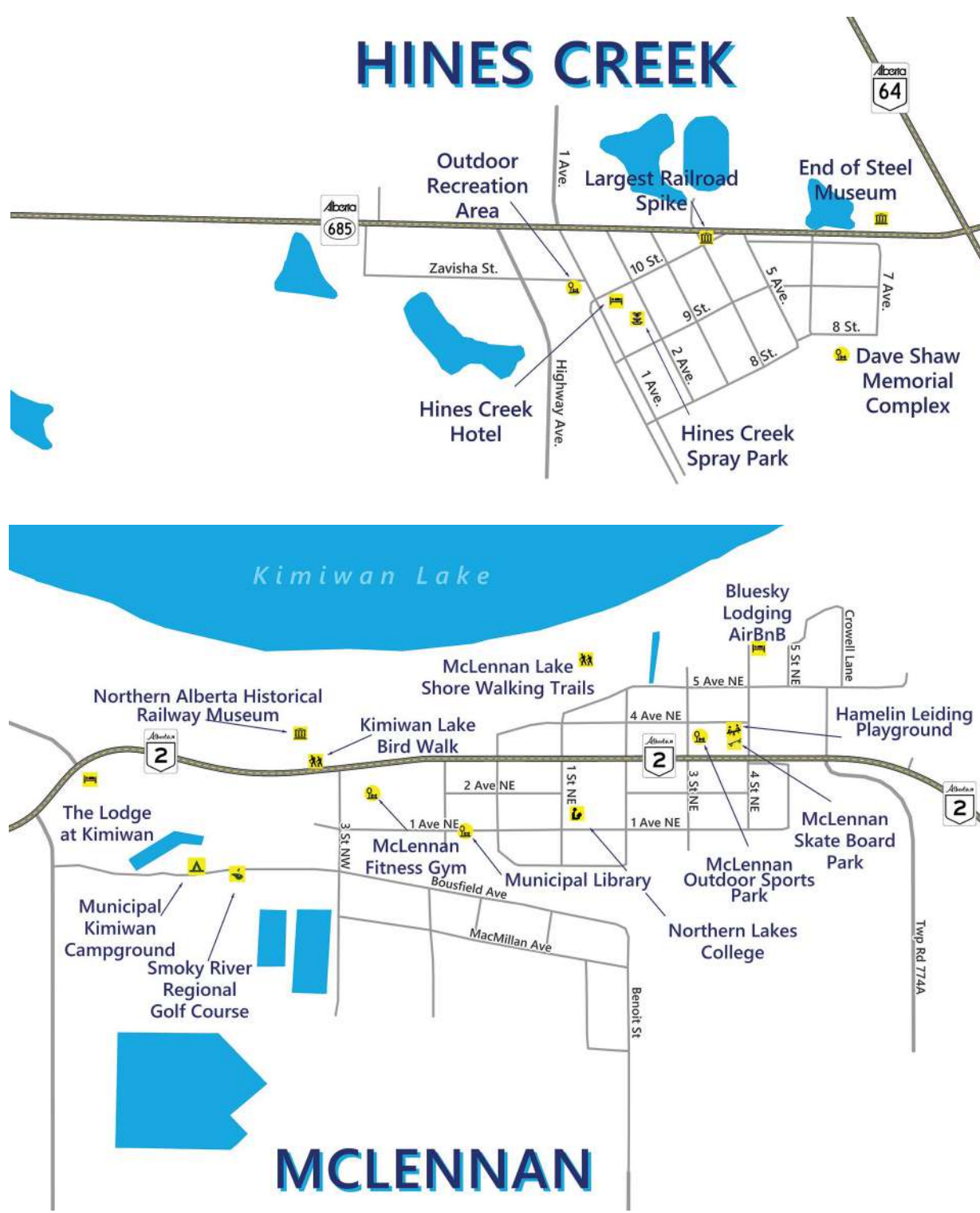
- TWIN LAKES PROVINCIAL PARK CAMPGROUND**
49 sites | unserviced
Open May - Oct.
780-624-6125
[Website](#)
- NOTIKWIN PROVINCIAL PARK CAMPGROUND**
19 sites | unserviced
Open May - Oct.
780-624-6125
[Website](#)
- FALHER CAMPGROUND**
30 serviced & unserviced site
\$25 - \$30/night | showers
780-837-2247
202 HWY 49
[Website](#)
- MCLENNAN MUNICIPAL KIMIWAN CAMPGROUND**
12 sites | power
6 sites | unserviced
780-624-6125
admin@mclennan.ca
[Website](#)
- LITTLE PRAIRIE RV PARK**
31 sites | serviced
Open May - Oct.
780-836-3150
[Website](#)
- SULPHUR LAKE PARK**
11 sites | Open May - Sept.
780-624-6125
[Website](#)
- SHADY LAKE CAMPGROUND**
23 sites (20 serviced)
Open May - Oct.
780-625-8766
[Website](#)
- LEDDY LAKE CAMPGROUND & RECREATIONAL AREA**
Year-round access
32 sites with 2 group areas
30/20/15 amp & unservice sites
780-274-0421
Visit [Website](#)
- FIGURE 8 PROVINCIAL PARK & RECREATION AREA**
27 sites | Open May - Oct.
780-624-6125
[Website](#)
- TANGENT PARK**
68 Sites | 780-359-2025
[Website](#)
- LAC CARDINAL RECREATION AREA**
16 sites | No power or showers
Open May - Oct.
780-338-3845
[Website](#)
- WILLOW BAY CAMPGROUND**
20 sites | unserviced
780-625-7336
[Website](#)
- QUEEN ELIZABETH PROVINCIAL PARK**
56 sites (42 serviced)
780-624-6125
[Website](#)
- HAIG LAKE CAMPGROUND**
7 unserviced sites
780-629-3803
- RENDEZVOUS RV PARK**
30-50 Amp full service
15 Amp available
10 minutes from Peace River
Open year-round
780-618-1345
[Website](#)
- MIGHTY PEACE GOLF CAMPGROUND**
12 sites | serviced
12 sites | unserviced
780-332-4653
[Website](#)
- HARMON VALLEY PARK & CAMPGROUND**
17 sites | Open May - Oct.
780-322-3831
[Website](#)
- HEART RIVER GOLF & CAMPGROUND**
15 sites | serviced
Open May - Oct.
780-322-3977
[Website](#)
- STRONG CREEK PARK**
18 sites (no charge)
No power or showers
Open May to Nov.
780-338-3845
[Website](#)
- BROWNVALE BALL DIAMONDS**
10 sites (no charge)
No power or showers
780-338-3845
- CUMMINGS LAKE CAMPGROUND & RECREATION AREA**
32 sites | Open May - Oct.
Seasonal sites available
780-835-8651
[Website](#)
- DUNVEGAN PROVINCIAL PARK**
65 sites | Open May to Oct.
1-877-537-2757
[Website](#)
- PRATT'S LANDING**
12 sites | unserviced
No all weather roads
Open May - Oct.
780-835-4903
[Website](#)
- GEORGE LAKE**
28 campsites powered
Open May - Oct.
780-494-3684 | 780-835-8558
[Website](#)
- CARTERS CAMP PARK**
20 sites
780-835-0731 | 780-835-8253
[Website](#)
- STONEY LAKE**
14 sites | 780-624-6125
[Website](#)
- RUNNING LAKE PROVINCIAL RECREATION AREA**
17 sites (RVs & Tenting)
780-685-3925
[Website](#)
- MANY ISLANDS**
24 sites | Open May 15 - Oct. 15
manyislandscampground@gmail.com
[Website](#)
- CLEARDALE CAMPGROUND**
780-835-9403
[Website](#)
- CLEAR RIVER CAMPGROUND**
\$10/night, unserviced,
no reservations,
firewood provided
780-835-9403
[Website](#)
- OLE'S LAKE**
\$15/night, unserviced,
no reservations,
firewood provided
780-685-3925
[Website](#)
- GIROUXVILLE CAMPGROUND**
serviced sites | \$20/night
Open May - Sept.
780-323-4252
4820 52 Ave
- CECIL THOMPSON PARK**
12 sites | unserviced
780-322-3831
[Website](#)
- NORTHERN TIMBERS RV PARK & CAMPGROUND**
15 sites | 30 Amp full service
25 sites | 15 Amp, power/water
Call for unserviced sites
780-219-9500
- OTTER LAKE CAMPGROUND**
10 unserviced sites
780-629-3803
- MILL BROWN PARK**
8 serviced sites | \$20/night
Open May - Sept.
780-322-3852
- MAPLES DAY USE AREA**
Straight west of Historic
Dunvegan. Firepits,
playground, toilets, trails.
Call 780-835-4903 to
reserve for special events.
[Website](#)
- BLUE BRIDGE RUSTIC CAMPING**
780-837-2221
[Website](#)
- KAKUT LAKE CAMPGROUND**
24 Serviced Sites
780-694-2643
[Website](#)
- DREAMERS LAKE CAMPGROUND**
24 serviced & unserviced sites
780-694-2020
dreamers.reservations@outlook.com
[Website](#)
- SPRING LAKE CAMPGROUND**
Open May 12 - Oct 1
780-356-2498
[Website](#)
- MOONSHINE LAKE CAMPGROUND**
1-888-864-3760
[Website](#)
- COTILLION PARK**
20 overnight sites
780-864-1156
[Website](#)
- HILL TOP LAKE CAMPGROUND**
10 sites
780-864-3760
[Website](#)
- FOURTH CREEK CAMPGROUND**
10 serviced sites
780-500-6441
[Website](#)
- THE CREEK CAMPGROUND**
41 serviced & unserviced sites
780-933-9658
[Website](#)

GOLF COURSES

- CONDY MEADOWS GOLF COURSE**
780-836-2176
- 5 STAR GOLF CLUB & CAMPGROUND**
780-837-2100
[Website](#)
- MIGHTY PEACE GOLF CLUB & CAMPGROUND**
780-332-4653
[Website](#)
- HEART RIVER GOLF COURSE**
780-322-3977
[Website](#)
- FAIRVIEW GOLF COURSE & CAMPGROUND**
780-835-2844
[Website](#)
- HINES CREEK GOLF & COUNTRY CLUB**
780-494-2217
FB: Hines Creek Golf & Country Club
[Website](#)
- CLEARDALE GOLF COURSE**
780-835-9403
- SMOKY RIVER REGIONAL GOLF COURSE**
780-324-3661
[Website](#)
- FOX HAVEN GOLF AND COUNTRY CLUB**
780-926-3005
[Website](#)
- HIGH PRAIRIE GOLF COURSE**
780-523-2696
[Website](#)
- EAGLESHAM LAKESIDE GOLF & COUNTRY CLUB**
780-359-2520
[Website](#)

MUSEUMS & VISITOR INFO CENTERS

- PEACE RIVER MUSEUM & ARCHIVES**
780-624-4261
10302 - 99 St, Peace River, AB
Tuesday - Saturday; 10 am - 4 pm
[Website](#)
- HISTORIC NORTHERN ALBERTA RAILWAYS (NAR) STATION AND VISITOR INFORMATION SERVICES**
780-624-2044
9409 100 St, Peace River, AB
Open May long weekend
Close September long weekend
Friday - Monday; 9 am - 4:30 pm
- END OF STEEL MUSEUM**
780-494-3522
Intersection of Highway 64 & Highway 685, Hines Creek, AB
[Website](#)
- GIROUXVILLE MUSEUM**
780-323-4252
5015 50 St, Girouxville, AB
- NAMPA & DISTRICT MUSEUM / VISITOR INFORMATION CENTRE**
780-322-2777
9902-102 Ave, Nampa, AB
[Website](#)
- FAIRVIEW PIONEER MUSEUM**
780-835-2632
1km north of Fairview on Highway 732 at Cummings Lake turnoff.
780-835-8049
[Website](#)
- WORSLEY HOMESTEAD HERITAGE MUSEUM**
780-685-3925
Worsley, AB
[Website](#)
- NORTH PEACE AGRICULTURE MUSEUM**
780-740-5048
Corner of Highway 2 and Highway 737, Brownvale, AB
[Website](#)
- BATTLE RIVER PIONEER MUSEUM**
780-836-3705
1km east of Manning on Highway 691.
[Website](#)
- LAC CARDINAL REGIONAL PIONEER MUSEUM**
780-332-2030
Open May - September
6 km from Grimshaw via Highway 2 or Highway 685.
[Website](#)
- ST. ISIDORE MUSEUM**
780-624-8481
Bouchard Street, St. Isidore, AB
[Website](#)
- NORTHERN ALBERTA HISTORICAL MUSEUM**
780-827-1292 or 780-925-0405
302 - 3 Avenue NW
McLennan, Alberta
- HISTORIC DUNVEGAN PROVINCIAL PARK & VIC**
780-835-7150
26 kilometres south of Fairview, Alberta on Highway 2.
[Website](#)
- FAIRVIEW VISITOR INFORMATION CENTRE**
780-835-2812
In the Fairview Community Centre
11219 95 Ave, Fairview, AB
- GRIMSHAW VISITOR INFORMATION CENTRE - MULTIPLEX**
780-332-4005
4609 50 St, Grimshaw, AB
- DIXONVILLE MUSEUM**
780-971-2247
Main Street, Dixonville, AB
Open July - August
Saturday & Sunday; 12pm-2pm
[Website](#)



- LEGEND**
- Visitor Information
 - Attraction/Recreational
 - Art & Heritage
 - Skate Park
 - Spray Park
 - Playground
 - Campground
 - Golf Course
 - Lookout
 - Boat Launch
 - Park
 - Rodeo Ground
 - Ski Hill
 - Staging Area
 - Walking Trail
 - College/School
 - Accommodation
 - Restaurant



MIGHTY PEACE ESSENTIALS

12 FOOT DAVIS

A wooden statue of 12 Foot Davis stands proudly in Riverfront Park, located in downtown Peace River. Just a few kilometres from downtown Peace River, the 12 Foot Davis memorial site overlooks the magnificent Peace Valley at the confluence of the Smoky and Peace Rivers.

[Find Out More >>](#)

BAY TREE STORE

The Bay Tree Store offers delicious hot or cold meal options made in store as well as some locally made snack options. Grab a soft serve ice cream on a hot day or a hot fresh coffee on a cold day. Hunting and fishing supplies are available as well. Don't leave without taking a selfie with the handsome sasquatch just outside the front door.

[Find Out More >>](#)

BAY TREE BOUTIQUE

Treat yourself to a little retail therapy! A wide variety of chic women's wear, accessories, trendy footwear, hats and much more is displayed in this modern and tastefully designed space.

[Find Out More >>](#)

CECIL THOMPSON PARK

The bouncy pillow at Cecil Thompson Park has fast become a landmark in the community of Northern Sunrise County. The park also features: challenging outdoor exercise equipment, a wonderful fishing pond, a beautiful gazebo and walking bridge. A perfect location to spend the Day or spend the night at one of our 11 unserviced lots at no charge.

[Find Out More >>](#)

CUMMINGS LAKE TRAILS AND CAMPGROUND

The beautiful Cummings Lake Recreation Area, two km north of Fairview, offers a lovely lake with campground, group camping, baseball diamonds, horseshoe pits, playground and the Cummings Lake Trail. This 11 km trail wanders through town, country, golf course, wetlands, boreal forest, play fields, campground picnic areas and historic museum site. It's a birdwatcher's paradise. Many varieties of wildlife are often spotted. Canoeing on the lake is nothing less than therapeutic.

[Find Out More >>](#)

DUNVEGAN MARKET GARDENS

If you are looking for a place to enjoy nature, shop for local produce, and have some family fun, look no further than Dunvegan Market Gardens. Located only 26km south of the Town of Fairview and right next to Dunvegan Provincial Park just off Highway 2.

[Find Out More >>](#)

FAIRVIEW FINE ARTS CENTRE

The Fairview Fine Arts Centre is a little gem in the Heart of the Peace. With art shows, classes (weaving, photography, painting, quilting, and more) and various events throughout the year, you will want to keep an eye on what's happening at the Fairview Art's Centre!

[Find Out More >>](#)

GRIMSHAW MILE ZERO HIGHWAY

By virtue of being the original starting point of Highway 35, which leads to the Northwest Territories, Grimshaw is referred to as Mile Zero of the Mackenzie Highway. The Historic Mile 0 Mackenzie Park and the Tom Baldwin Memorial Arboretum located at the corner of Highway 2 and Highway 2A are fully landscaped passive recreational interpretive park reflecting local and regional history.

[Find Out More >>](#)

GROW NORTH GARDENS

Located in the Heart of the Peace. They carrying a massive variety of bedding plants, vegetables, house plants, trees and shrubs in the spring. This gorgeous flower farm is home to 90 unique types of fresh flowers for a flower subscription service available from June to September.

[Find Out More >>](#)

HISTORIC DUNVEGAN PROVINCIAL PARK

Journey through time and discover a piece of the fur trade, missionary and First Nations history at this provincially operated National Historic Site of Canada. Don't forget to also check out the Dunvegan Market Gardens for fresh produce, flowers, gifts and mini-golf!

[Find Out More >>](#)

KIMIWAN LAKE BIRD WALK

Come explore one of the must-see birding destinations in the Peace Region, the Kimiwan Bird Walk. This area in McLennan is indisputably one of the premier waterfowl sighting areas in North America. The Interpretive Centre is open May through August and will lend you a pair of binoculars to get a close-up view of wildlife.

[Find Out More >>](#)

LAST SPIKE HINES CREEK

Hines Creek is known as the "End of Steel" - because it was historically the furthest point north and west that the Northern Alberta Railway extended to across the vast prairies. The Village erected the world's largest spike in 1992, measuring 13 feet high and 15 inches wide, developing "Spike Park".

[Find Out More >>](#)

LOCAL SKI HILLS

Winter can be long so why not enjoy it! Come and enjoy one of the four local hills in the Mighty Peace region at an affordable price with short lift lines.

[Find Out More >>](#)

MACKENZIE CAIRN

The Mackenzie Cairn, built in 1929, honours both the Fort Fork trading post and the place where Mackenzie's important journey began. This National Historic Site also provides a wonderful view of the Peace River, and an information kiosk offers detailed maps, drawings of the fort and early photos. Historic tours are available during the summer months.

[Find Out More >>](#)

MISERY MOUNTAIN

Hike the stunning vistas of Misery Mountain in the Town of Peace River and enjoy a 360 degree view of the Peace River valley and the agricultural land that surrounds the town.

[Find Out More >>](#)

NORTHERN LAKES COLLEGE

Focuses on accessibility to meet the changing landscape of education and the needs of learners. Our innovative Supported Distance Learning (SDL) model ensures programs and services are accessible to students everywhere.

[Find Out More >>](#)

MURPHY'S FLATS

This scenic day use area running along the Smoky River is the perfect spot to enjoy an active day of hiking, fishing, kayaking or canoeing. The river may offer a natural sandy or rocky beach depending on the flow and height of the river water. The nearby Peace River Wildland Provincial Park offers amazing areas for mountain biking and hiking adventures. A leisurely stroll, rock collecting as well as wildlife and bird watching can be enjoyed by more gentle explorers. Pack a picnic so you can stay all day! There are firepits, tables and free firewood available.

[Find Out More >>](#)

PEACE RIVER ADVENTURES

Scenic bilingual river jet boat tours and paddle river toy rentals based out of the Town of Peace River.

[Find Out More >>](#)

PEACE RIVER ART HUT

Offering a variety of art classes, drop-in activities and events in the Town of Peace River.

[Find Out More >>](#)

PEACE VALLEY SNOW RIDER TRAILS

Get out of the house and enjoy winter with your family and friends on the beautiful snowmobile trails. There are 3 great groomed trails in the region ranging from 30km-60km and 3 more trails soon to come.

[Find Out More >>](#)

QUEEN ELIZABETH PROVINCIAL PARK

Located adjacent to the Lac Cardinal Recreation Area, this park has day use areas, overnight camping areas, a bird watching area, cross country ski trail, walking trail, boat dock and beach areas. Don't forget to also check out the Lac Cardinal Pioneer Village adjacent to the park.

[Find Out More >>](#)

CABINS & GUESTHOUSES

NORTHERN R&R BED AND BREAKFAST

Relax and unwind at this riverside retreat. Located in Watino, this cozy cabin sleeps 4 people and is beautifully positioned next to the Smoky River surrounded by trees providing plenty of privacy with breathtaking views of the river valley.

[Find Out More >>](#)

PEACE RIVER CABINS & OUTDOORS

Yearning to disappear to the riverbank in your own private retreat? Looking to kayak, canoe, or raft on the historical and scenic Peace River, or fly over in an ultralight plane? This is the place for you! You will be infected with our love of the river, water sport, and Northern Alberta wilderness.

[Find Out More >>](#)

MIRAMICHI HOUSE BED AND BREAKFAST

An elegant historic Georgian-style home, located in the Town of Fairview. The fresh seasonal food and drinks served are often locally sourced and then carefully prepared to meet the various dietary tastes and requirements of all of their guests.

[Find Out More >>](#)

PEACEFUL PINES BED AND BREAKFAST

Located in the friendly Village of Girouxville, this beautiful chalet style two story bed and breakfast nestled among mature pines will make visitors feel as though they are on a mountain getaway while staying right in town. This accommodation which offers all the comforts of home for up to 6 people.

[Find Out More >>](#)

THE ST. ISIDORE WEAVERS/ TISSERANDES DE ST. ISIDORE

Weaving is an ancient art! At the Centre Culturel de St-Isidore the St. Isidore Weavers share their talents and perpetuates the traditional arts and crafts of their ancestors. Stop by and admire or take home a piece of their work.

[Find Out More >>](#)

VALLEY B AVIATION

Offering scenic helicopter tours in the Mighty Peace.

[Find Out More >>](#)

WHIRLWIND ACRES

Have you ever wanted to get up close and personal with a purebred Siberian Husky sled dog? Because now you can at Whirlwind Acres! Offering year-round fun, a dog boarding kennel and one-of-a-kind experiences, Whirlwind Acres is truly an animal lover's dream. During the snowy season, visitors can book a dog sledding tour and experience a once in a lifetime moment behind the fast feet in front of them.

[Find Out More >>](#)

WILDERNESS PARK

Head out to Wilderness Park located approximately 11km west of Peace River. This day use area has picnic tables, fire pits and man-made ponds to enjoy! Fishing enthusiasts should bring your fishing rods as the ponds are stocked with rainbow trout and grayling!

[Find Out More >>](#)

WORLD'S LARGEST BEE

Created in 1990, the world's largest bee resides in the Town of Falher. Standing over 20 feet tall, it's the perfect spot to snap a selfie and read up about the local history.

[Find Out More >>](#)

THE GREEN GODDESS

Treat yourself to organic, nourishing, luxurious and ethical products from The Green Goddess and your body and spirit will thank you. Offering a wide variety of high-quality skincare products, essential oils, personal hygiene products, teas, handcrafted soaps and one-of-a-kind workshops.

[Find Out More >>](#)

THE LODGE AT KIMIWAN

Located in the bird capital of Canada in Sunny McLennan. The lodge offers beautiful clean rooms and helpful staff that are attentive to detail.

[Find Out More >>](#)

THIRD MISSION HERITAGE SUITES

The Third Mission Heritage Suites are conveniently located on the riverfront in the Town Centre of Peace River and offer all the services you expect in a luxury boutique hotel including a beautiful view.

[Find Out More >>](#)

WILDROSE GUESTHOUSE

With a gorgeous backdrop of the Peace River and Valley surrounding this home, guests will find all the amenities and luxuries found in a modern, high quality hotel in a metropolitan city.

[Find Out More >>](#)

BILLIE'S CONES

Billie's Cones has something for everyone and is conveniently located on Main Street Peace River. With over 30 flavours of ice cream, snow cones and cotton candy, it's a one stop shop to cure your sweet tooth and feel like a kid again.

[Find Out More >>](#)

BOARD 'N' BARREL

A foodie destination hot spot located on the picturesque Peace River concentrating on a flavour forward locally sourced menu with in-house made foods that rival the "big city" dining options.

[Find Out More >>](#)

FAIRVIEW PIZZA & DONAIR

The next time you are in Fairview head on over to Fairview Pizza & Donair. Their extensive menu has a little something for everyone. Their menu features tasty appetizers, specialty pizzas, authentic donairs, Italian food, entrees, sandwiches, hot sandwiches and burgers.

[Find Out More >>](#)

HEILAN BEER HOUSE

Stop by and enjoy local rotating brews and eats at Fairview's only brewery.

[Find Out More >>](#)

J'S JAVA DOMAIN

J's Java Domain caters to all seasons, whether you need to warm up with a spicy cup of chai and a hot-pressed panini, or cool down with an iced coffee and a scoop of ice cream. It's the perfect place to go to if you want to treat yourself or if you want to sit down and enjoy a friendly conversation with someone.

[Find Out More >>](#)

KROOKED HOUSE

A small pub that is focused on selling Alberta craft brewed beer and pub fare.

[Find Out More >>](#)

MR. MIKES

Enjoy a delicious meal, a memorable celebration with family and friends or a night out to watch the game at Mr. Mike's Steakhouse. They offer two experiences under one roof - the restaurant with the family-friendly vibe and the Urban Lodge with more of an eclectic "Cheers" sitcom vibe where everyone is like family.

[Find Out More >>](#)

NAMPA SUNRISE CAFE

A modern licensed cafe with an eclectic, refined twist - serving homemade fare and specialty coffee and retrofitted with interesting pieces of local history.

[Find Out More >>](#)

NAZ'S PIZZA AND DONAIR

Delicious pizza, donair, and East Indian cuisine. The family-owned and operated restaurant offers a variety of dishes made with fresh ingredients and authentic recipes. Check out the East Indian buffet that features mouthwatering curries, naan bread, rice and desserts.

[Find Out More >>](#)

PEACE RIVER BREWING & DISTILLING

Peace River's only family friendly taproom, serving craft beer, light snacks and house made kombucha.

[Find Out More >>](#)

PIZZA HAVEN

This locally owned eatery offers a warm and welcoming licensed restaurant and lounge - serving delicious pasta, pizza and their famous pizza bread. In house made pizza crust and meat sauce makes these dishes a truly scrumptious culinary experience.

[Find Out More >>](#)

THE OLD BISTRO

Here you'll find coffee lovers enjoying a yummy warm drink, people visiting, working, or having a formal meeting in one of their three different gathering areas. In addition to being a cozy and welcoming place to hang out, the Old Bistro has a ton of unique handcrafted items curated by local artisans.

[Find Out More >>](#)

VALLEY BEE CAFE

Relax with friends over unique beverages and goodies while all being able to observe the inner workings of a honey farm operation.

[Find Out More >>](#)

WHAT THE CHUCK

Peace River's newest gourmet burger restaurant. Create your own burger from a variety of toppings, patties, buns, and experience a mouthwatering meal perfected to your personal preferences.

[Find Out More >>](#)



FOR MORE TRAVEL IDEAS
AND EVENTS CHECK OUT
WWW.MIGHTYPEACE.COM

COUNTY OF NORTHERN LIGHTS

NORTHERN SUNRISE COUNTY

